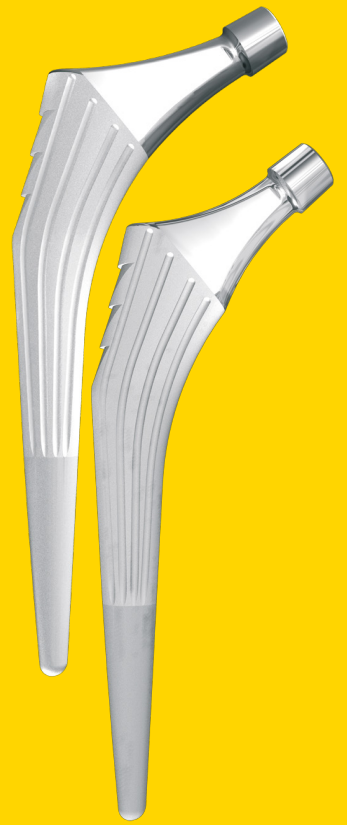




HIP



DOCUMENTATION

**FIRST INTENTION CEMENTLESS STRAIGHT STEM
STANDARD OR LATERALIZED**

Hip & go

Femoral stem

The Hip'n go cementless straight stems are self-locking stems based on a conventional design.

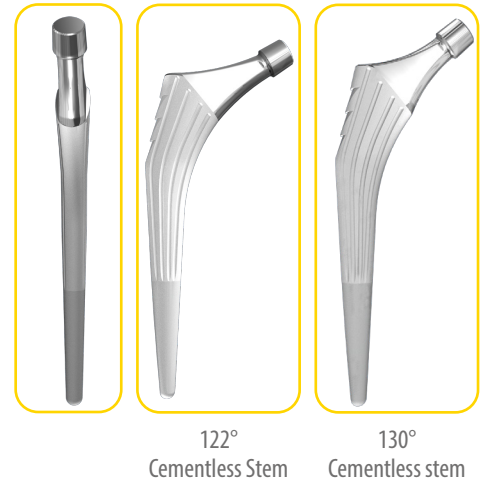
Concept

The universal Hip'n go concept offers the choice, pre or peroperatively, between using a standard cementless stem (CDD angle 130°) or a lateralized cementless stem (CDD angle 122°). The tulip shape of the metaphysis and the anteroposterior and lateral macrostructures facilitates primary fixation of the stem; a T40 porous titanium spray and an HAP coating facilitate secondary fixation.

Range and Materials

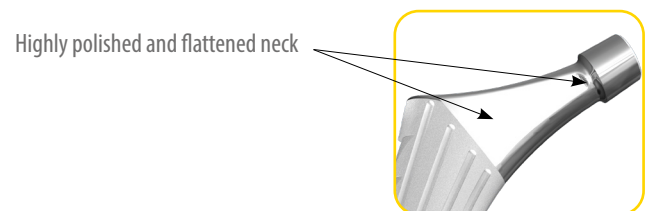
The range of straight Hip'n go stems include 10 sizes, available in 130° and 122°.

The range of implants is made out of TA6 V4 titanium alloy. The outside surface has a T40 titanium spray and hydroxyapatite coating.



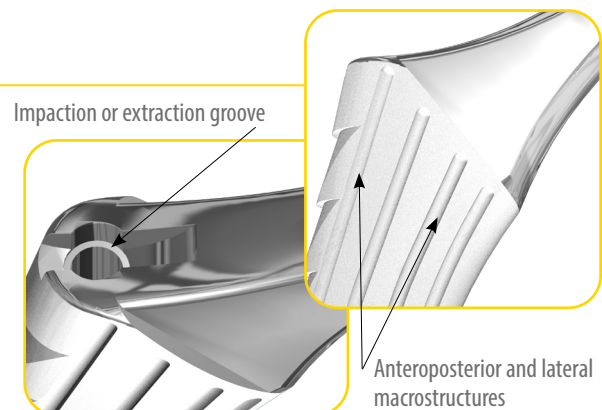
Taper and neck

The neck is fitted with a 12/14 taper, enabling it to be used with an alumina head. The taper is flattened in the anteroposterior section and reduced below the neck to a diameter of 11mm to increase the ROM (Range of Motion).



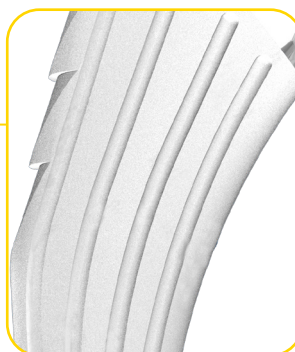
Metaphysis

The tulip shape of the metaphysis and the macrostructures enable primary fixation. The proximal part of the metaphysis includes a semi-circular groove for guided impaction and a screw thread to facilitate extraction of the stem, if necessary.



Coating

Hip'n go stems are coated with T40 titanium on the 2/3 proximal part and a total hydroxyapatite coating to enable secondary fixation.

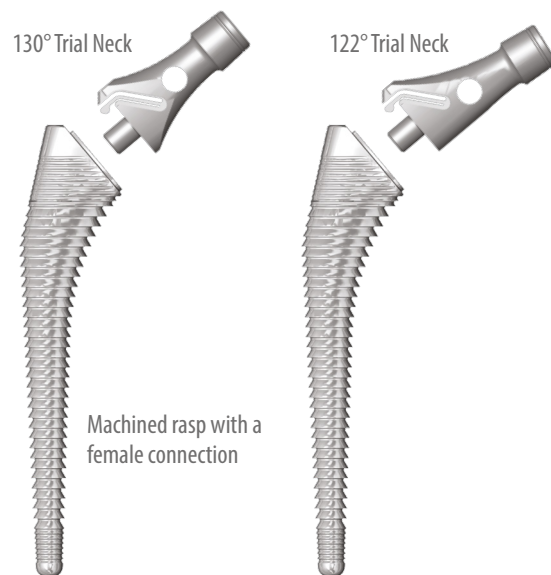
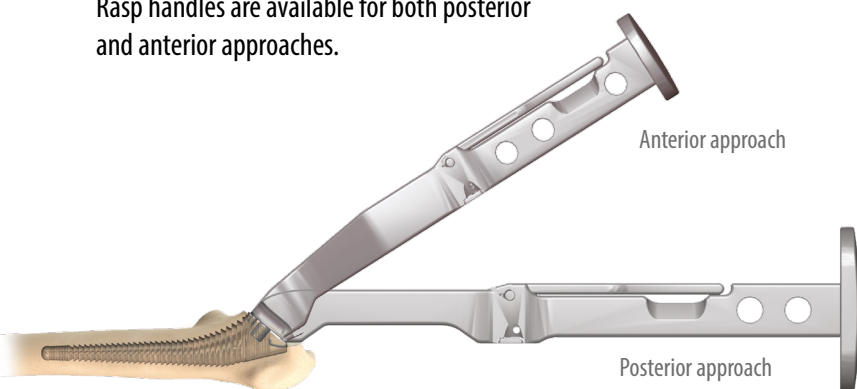


Instrumentation

The specific Hip'n go instrumentation set is a common instrumentation for all cemented and cementless stems available in this program.

This instrumentation allows all approaches to be used, including mini-invasive approaches.

Rasp handles are available for both posterior and anterior approaches.



REFERENCES

[Cementless femoral stems]

STANDARD CEMENTLESS STEMS		CEMENTLESS VARIZED AND LATERALIZED STEMS	
256 597	Stem HNG 130° CL HAP S1	256 607	Stem HNG 122° CL HAP S1
256 598	Stem HNG 130° CL HAP S2	256 608	Stem HNG 122° CL HAP S2
256 599	Stem HNG 130° CL HAP S3	256 609	Stem HNG 122° CL HAP S3
256 600	Stem HNG 130° CL HAP S4	256 610	Stem HNG 122° CL HAP S4
256 601	Stem HNG 130° CL HAP S5	256 611	Stem HNG 122° CL HAP S5
256 602	Stem HNG 130° CL HAP S6	256 612	Stem HNG 122° CL HAP S6
256 603	Stem HNG 130° CL HAP S7	256 613	Stem HNG 122° CL HAP S7
256 604	Stem HNG 130° CL HAP S8	256 614	Stem HNG 122° CL HAP S8
256 605	Stem HNG 130° CL HAP S9	256 615	Stem HNG 122° CL HAP S9
256 606	Stem HNG 130° CL HAP S10	256 616	Stem HNG 122° CL HAP S10

REFERENCES

[Femoral heads]

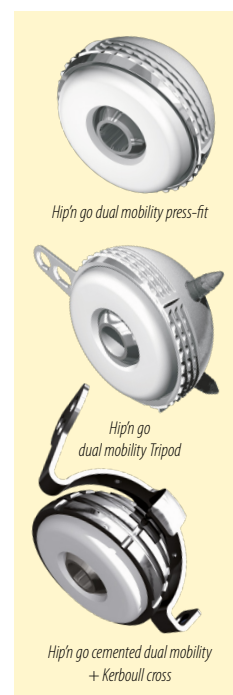
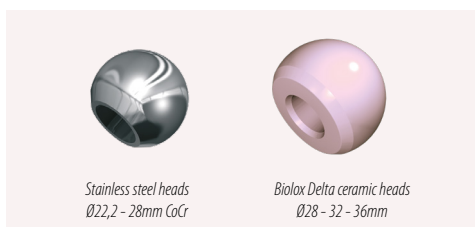
BIOLOX DELTA CERAMIC HEADS

256 516	Taper 12/14 Ø28 (-3,5)
256 517	Taper 12/14 Ø28 (0)
256 518	Taper 12/14 Ø28 (+3,5)
256 519	Taper 12/14 Ø32 (-3,5)
256 520	Taper 12/14 Ø32 (0)
256 521	Taper 12/14 Ø32 (+3,5)
256 522	Taper 12/14 Ø36 (-3,5)
256 523	Taper 12/14 Ø36 (0)
256 524	Taper 12/14 Ø36 (+3,5)

STAINLESS STEEL HEADS

231 402	Taper 12/14 Ø22,2 (0)
231 403	Taper 12/14 Ø22,2 (+2)
231 391	Taper 12/14 Ø28 (-3,5)
231 392	Taper 12/14 Ø28 (0)
231 393	Taper 12/14 Ø28 (+3,5)
231 394	Taper 12/14 Ø28 (+7)

OTHER IMPLANTS OF THE RANGE



Manufacturer: FH INDUSTRIE
6 rue Nobel 29000 Quimper - France
e-mail : contact@fh-industrie.com



FR, FH ORTHO SAS
3 rue de la Forêt
68990 HEIMSBRUNN - FRANCE
Tél.: +33 (0)3 89 81 90 92
Fax : +33 (0)3 89 81 80 11
info@fhortho.com
www.fhortho.com

USA, FH ORTHO INC.
4908 N. Elston
Chicago - IL 60630 - USA
Tel.: +1 (773) 290 1039 / 844-77 FHINC
Fax: +1 (708) 667 7618
info-us@fhorthopedics.com
www.fhortho.com

UK, FH ORTHO LTD
Unit 1b, Century Park, Valley way
Swansea Enterprise Park, Swansea, SA6 8RP - UK
Tel.: +44 (0) 1792 464792
Fax: +44 (0) 844 412 7674
customer-servicesUK@fhorthopedics.com
www.fhortho.com

PL, FH ORTHO POLSKA
Ul. Garbary 95/A6,
61-757 Poznan - POLSKA
Tel: +48 61 863 81 27
Fax: +48 61 863 81 28
biuro@implants24.pl
www.fhortho.com