

FOOT

# EASY MOVE

## Total Ankle Replacement

## ANATOMICAL DESIGN

Fixed-bearing Total Ankle Replacement

Designed to restore the ankle joint and ensuring full respect of the ankle anatomy

Minimal bone loss with full replacement of removed bones

Preserving the posterior „Volkman triangle“

Curved anatomical tibia cut through anterior approach

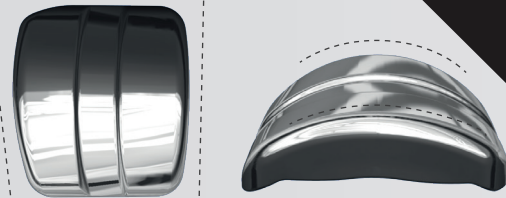
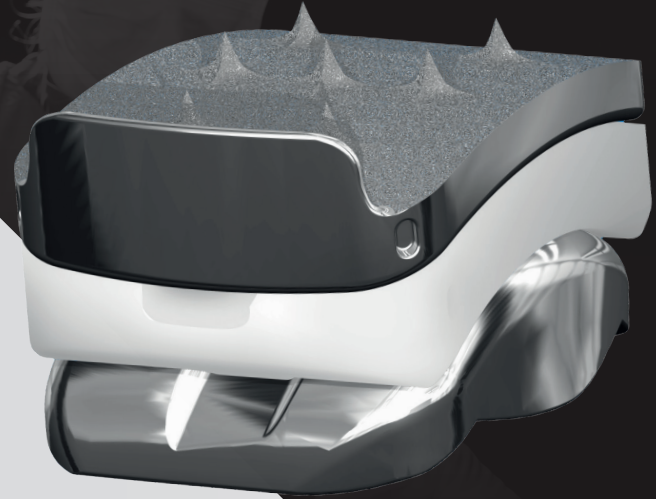
Intra-articular tibial jig to determinate anatomical landmarks: rotation, translation, tibial plafond varus/valgus and slope

Minimal X-Ray control

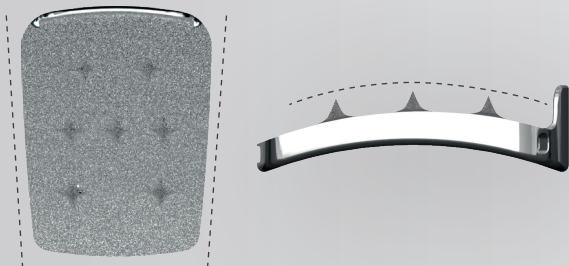
Reproducible results through precise instruments

Short learning curve

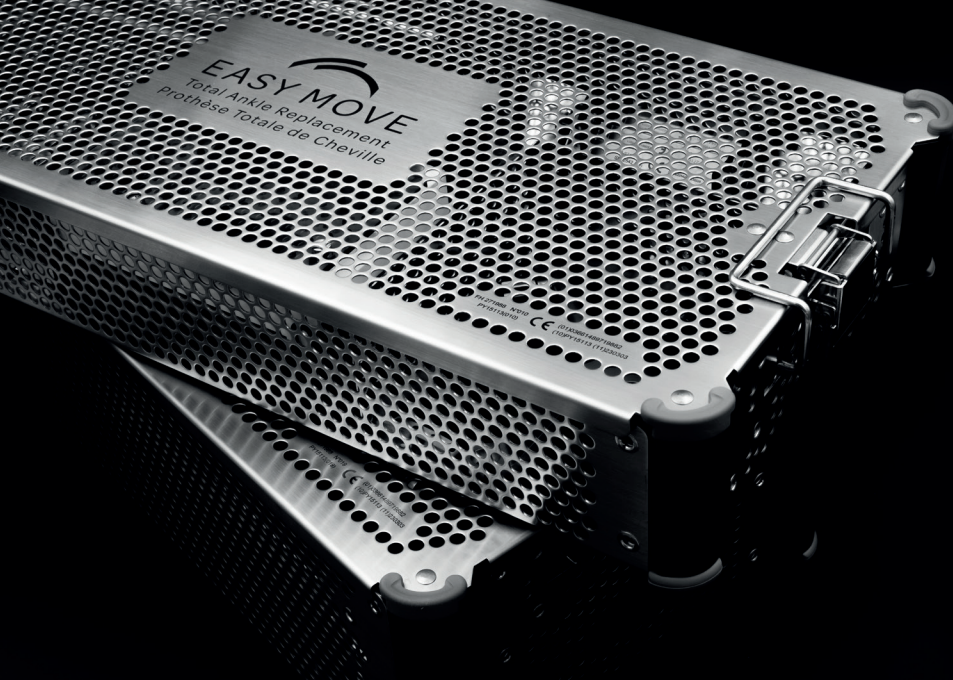
Titanium Plasma-Spray coated



- Talar implant anterior wider than posterior
- Medial radius smaller than lateral
- Conical designed



- Tibial implant anterior wider than posterior
- Curved anatomical tibia
- Less invasive tibial design does not destroy the distal cortex with voluminous anchors, such as pegs



# EASY MOVE

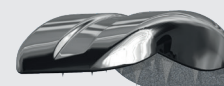
Total Ankle Replacement

## Implants



PE-INLAY (UHMWPE)		
SIZE	REF. LEFT	REF. RIGHT
S1 (4 mm)	269 797	269 832
S1 (6 mm)	269 799	269 834
S1 (8 mm)	269 801	269 836
S2 (4 mm)	269 802	269 837
S2 (6 mm)	269 804	269 839
S2 (8 mm)	269 806	269 841
S3 (4 mm)	269 807	269 842
S3 (6 mm)	269 809	269 844
S3 (8 mm)	269 811	269 846
S4 (4 mm)	269 812	269 847
S4 (6 mm)	269 814	269 849
S4 (8 mm)	269 816	269 851
S5 (4 mm)	269 817	269 852
S5 (6 mm)	269 819	269 854
S5 (8 mm)	269 821	269 856

TIBIA COMPONENT (Ti6Al4V)	
SIZE	REF.
Tibia S1	269 776
Tibia S2	269 777
Tibia S3	269 778
Tibia S4	269 779
Tibia S5	269 780



TALAR COMPONENT (CoCr)		
SIZE	REF. LEFT	REF. RIGHT
Talus S1	269 783	269 790
Talus S2	269 784	269 791
Talus S3	269 785	269 792
Talus S4	269 786	269 793
Talus S5	269 787	269 794



**DISTRIBUTEURS**  
DISTRIBUTORS



**FABRICANT**  
MANUFACTURER

GROUPE  
**FH ORTHO**

**FR, FH ORTHO SAS**  
3 rue de la Forêt - Zone Industrielle  
BP 50009  
68990 Heimsbrunn CEDEX - FRANCE  
Tél. +33 (0)3 89 81 90 92  
Fax : +33 (0)3 89 81 80 11  
info@fortho.com  
www.fortho.com

**USA, FH ORTHOPEDICS INC.**  
OrthoEx  
7327 E Tierra Buena Lane  
Scottsdale, Arizona 85260 - USA  
Phone: +1 (412) 965-0950  
customerservice@fortho-us.com  
www.fortho.com

**PL, FH ORTHO POLSKA**  
Ul. Garbary 95/A6,  
61-757 Poznan - POLSKA  
Phone: +48 61 863 81 27  
Fax: +48 61 863 81 28  
biuro@implants24.pl  
www.fortho.com

**FR, FH INDUSTRIE**  
6 rue Nobel, Z.I. de Kernevez  
29000 QUIMPER - FRANCE  
Tél. +33 (0)2 98 55 68 95  
Fax : +33 (0)2 98 53 42 13  
contact-fhi@fortho.com  
www.fortho.com