



ΚΝΕΕ



**FHK**<sup>®</sup>

Range of  
primary knee prostheses

GROUP  
**FH** ORTHO<sup>™</sup>

# FHK<sup>®</sup> PHILOSOPHY

The FHK<sup>®</sup> knee is a third generation knee prosthesis with the emphasis in design based around validated principles of knee replacement and with ergonomic instrumentation specifically with the user in mind.

The FHK<sup>®</sup> range offers a choice of implants fixed bearing (PS and CR) and mobile bearing (MB), to match the philosophies of surgeons and the most frequent indications.

The FHK<sup>®</sup> can be used without restriction and is adaptable for the most common technical choices, whilst respecting total knee replacement principles.

## RESPECTING KNEE BIOMECHANICS

### FIXED BEARING

The Posterior Stabilisation system reduces the risk of dislocation without excessive stress on the base plate. The location of the femoral cam reduces the leverage on the polyethylene and thus the risk of loosening. The femoral preparation for the cam is designed to preserve bone stock.



### MOBILE BEARING

Optimal congruency reduces the risk of wear and respects knee biomechanics. The system achieves stabilization with congruency, whilst providing anteroposterior stability, reducing polyethylene wear and preserving femoral bone.

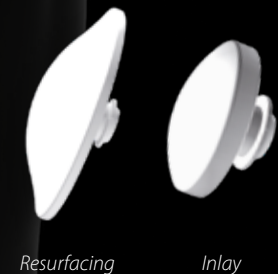


### PATELLA

Patella implant is available in 2 versions:

- resurfacing
- inlay

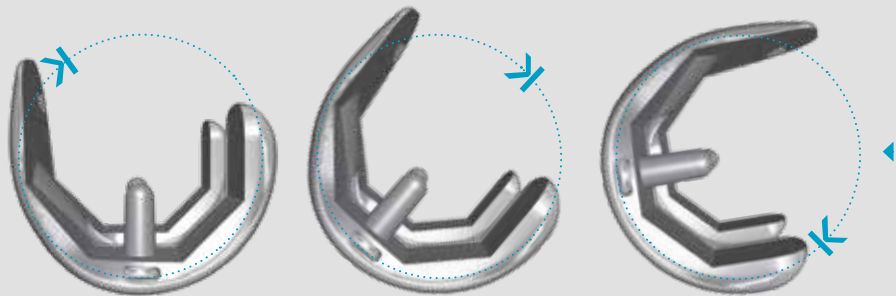
Designed to fit the prosthetic trochlea groove decreasing the risk of anterior compartment pressure.



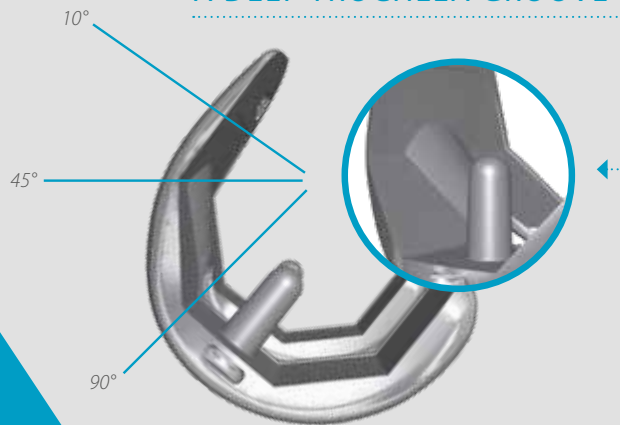
# FEMORAL CHARACTERISTICS

## SINGLE RADIUS

- Optimisation of kinematics;
- Decreased anterior pressure;
- Easier rehabilitation;
- Enhanced stability during flexion/extension.

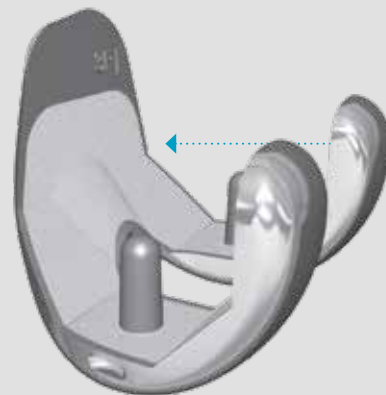


## A DEEP TROCHLEA GROOVE



- Reduces stress on the patella.

## COATING

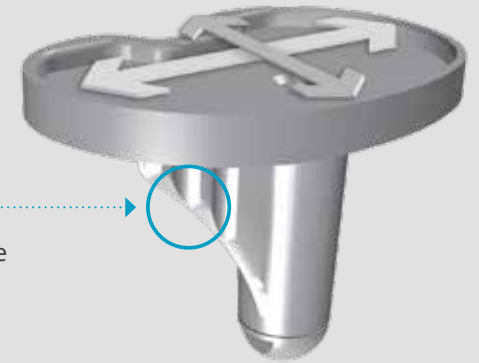


- Half height of the anterior coating to prevent osteopenia from stress shielding.

# TIBIAL CHARACTERISTICS

## AN OPTIMAL TIBIA COVERAGE

Optimum tibial coverage is achieved from morphological analysis of the most commonly encountered cut surfaces.

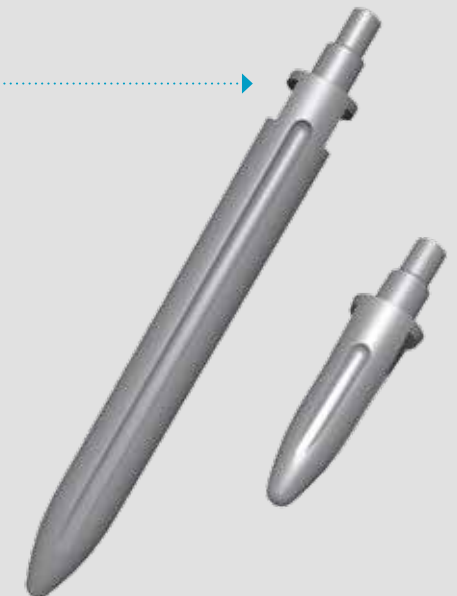


## ANCHORAGE KEEL

Orientated to areas with greater bone density, they provide strong primary anchorage, guaranteeing good osteointegration in the longer term.

## ADDITIONAL STEMS

Help to ensure good primary stability in poor bonestock.



# CUSTOMS INSTRUMENTATION

## CHOICE OF CUTS

- Tibial cut first
- Femoral cut first

## CHOICE OF FEMORAL REFERENCE

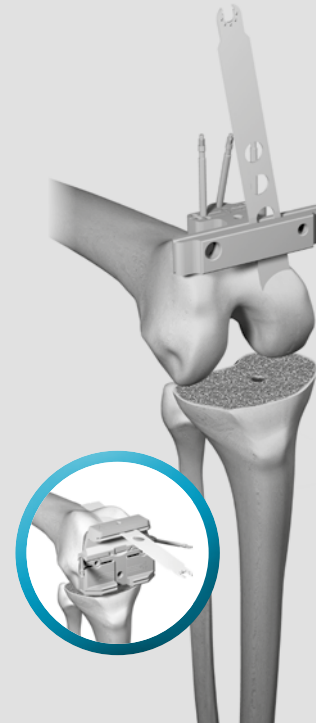
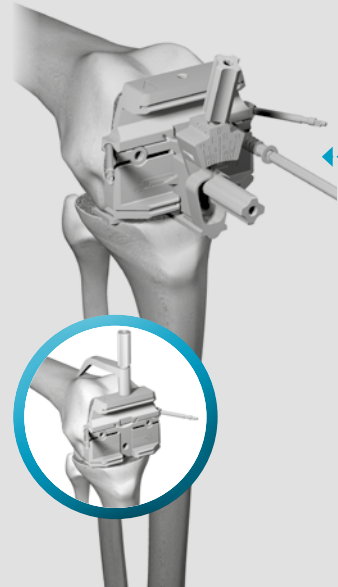
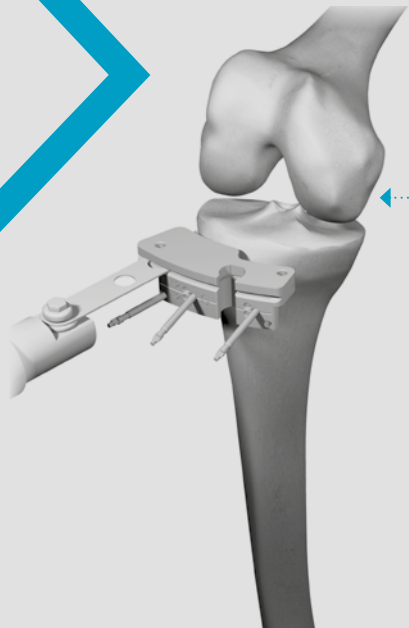
- Posterior reference
- Anterior reference

## FEMORAL CUTS CHOICE

- 1 + 4 cuts
- 5 in 1 cuts

## CHOICE OF TIBIAL ALIGNEMENT

- Intramedullary
- Extramedullary



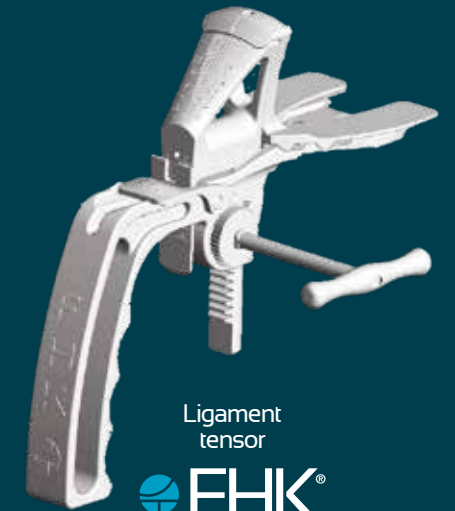
**Onlyyou®**

Solution of custom made cutting blocks

CT scan or MRI

Powered by

**oneFIT**



Ligament tensor

**FHK®**



DISTRIBUTEURS  
DISTRIBUTORS

**FR, FH ORTHO SAS**  
3 rue de la Forêt - Zone Industrielle  
BP 50009  
68990 Heimsbrunn CEDEX - FRANCE  
Tél. +33 (0)3 89 81 90 92  
Fax : +33 (0)3 89 81 80 11  
info@fhortho.com  
www.fhortho.com

**USA, FH ORTHOPEDICS INC.**  
OrthoEx  
7327 E Tierra Buena Lane  
Scottsdale, Arizona 85260 - USA  
Phone: +1 (412) 965-0950  
customerservice@fhortho-us.com  
www.fhortho.com

**PL, FH ORTHO POLSKA**  
Ul. Garbary 95/A6,  
61-757 Poznan - POLSKA  
Phone: +48 61 863 81 27  
Fax: +48 61 863 81 28  
biuro@implants24.pl  
www.fhortho.com



FABRICANT  
MANUFACTURER

**FR, FH INDUSTRIE**  
6 rue Nobel, Z.I. de Kernevez  
29000 QUIMPER - FRANCE  
Tél. +33 (0)2 98 55 68 95  
Fax : +33 (0)2 98 53 42 13  
contact-fhi@fhortho.com  
www.fhortho.com

GROUPE  
**FH ORTHO™**