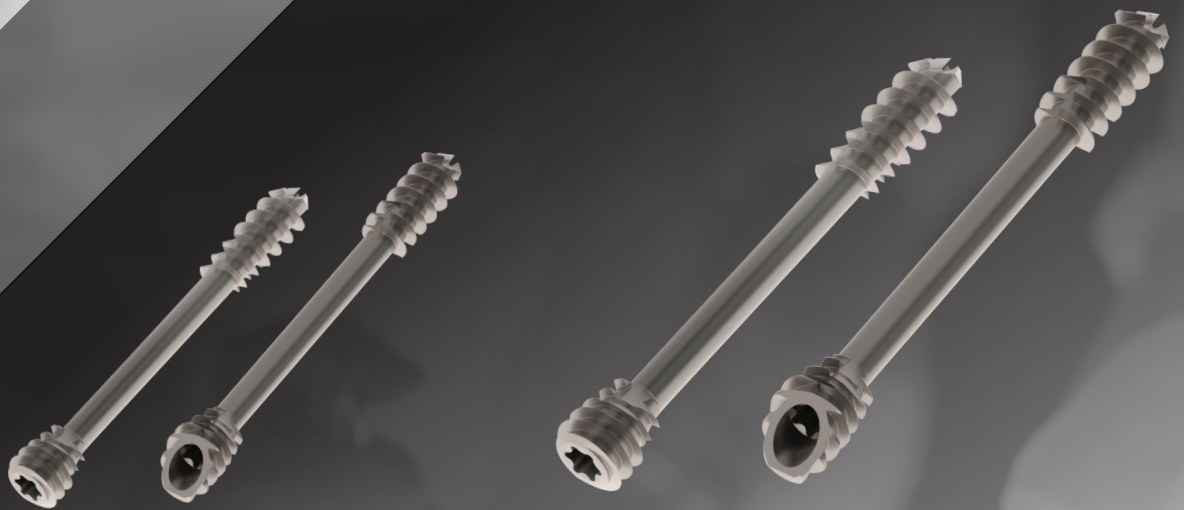




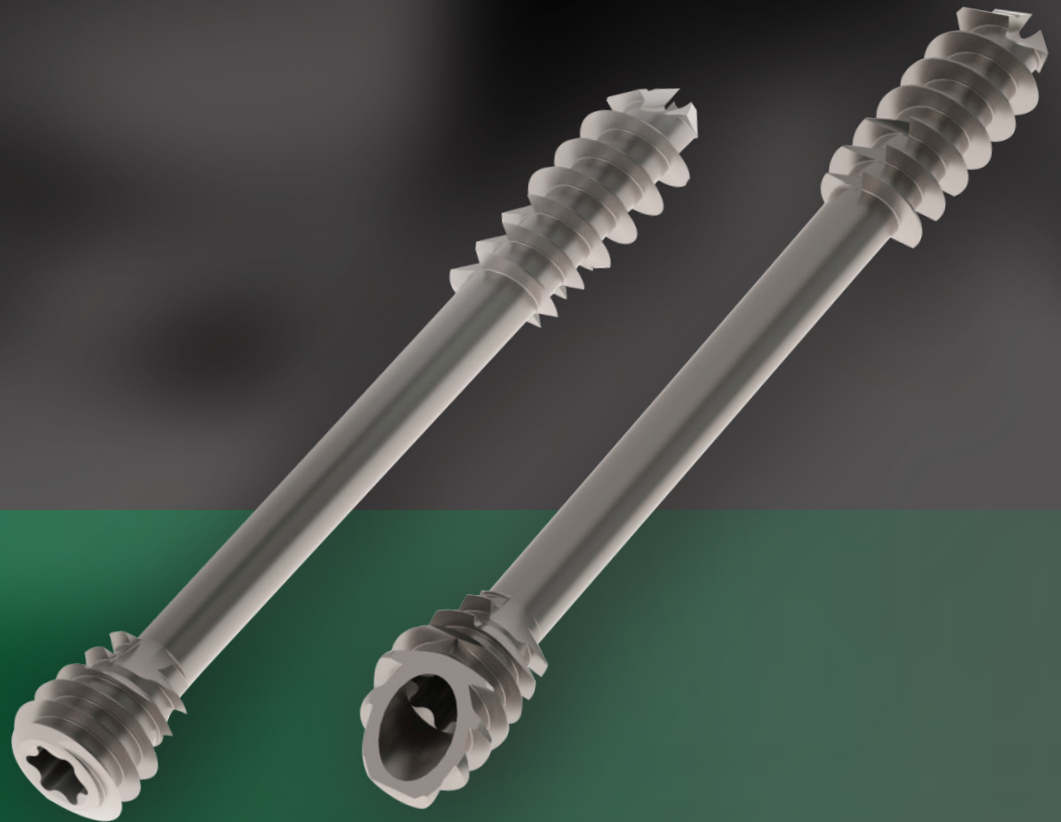
FOOT

MIDFOOT AND HINDFOOT SURGERY



MIDFOOT SCREWS Ø4.5 MM

HINDFOOT SCREWS Ø7 MM



HINDFOOT SCREWS Ø7 MM

INDICATIONS

The Ø7 mm hindfoot screws standard or beveled, are designed to meet the following indications:

- Foot arthritis
- Fixation of bone fragment
- Foot fracture management

And more specifically:

- Hindfoot arthrodesis, subtalar, talonavicular
- Talocrural arthrodesis
- Calcaneus osteotomy

IMPLANTS LIST

HINDFOOT SCREWS Ø7 MM



REF.	DESIGNATION	REF.	DESIGNATION
269 528	BEPOD 3A hindfoot screw D7.0 L35	269 537	BEPOD 3A hindfoot screw D7.0 L80
269 529	BEPOD 3A hindfoot screw D7.0 L40	269 538	BEPOD 3A hindfoot screw D7.0 L85
269 530	BEPOD 3A hindfoot screw D7.0 L45	269 539	BEPOD 3A hindfoot screw D7.0 L90
269 531	BEPOD 3A hindfoot screw D7.0 L50	269 540	BEPOD 3A hindfoot screw D7.0 L95
269 532	BEPOD 3A hindfoot screw D7.0 L55	269 541	BEPOD 3A hindfoot screw D7.0 L100
269 533	BEPOD 3A hindfoot screw D7.0 L60	269 542	BEPOD 3A hindfoot screw D7.0 L105
269 534	BEPOD 3A hindfoot screw D7.0 L65	269 543	BEPOD 3A hindfoot screw D7.0 L110
269 535	BEPOD 3A hindfoot screw D7.0 L70	269 544	BEPOD 3A hindfoot screw D7.0 L115
269 536	BEPOD 3A hindfoot screw D7.0 L75	269 545	BEPOD 3A hindfoot screw D7.0 L120

BEVELED HINDFOOT SCREWS Ø7 MM



REF.	DESIGNATION	REF.	DESIGNATION
270 005	BEPOD 3A beveled hindfoot screw D7.0 L35	270 014	BEPOD 3A beveled hindfoot screw D7.0 L80
270 006	BEPOD 3A beveled hindfoot screw D7.0 L40	270 015	BEPOD 3A beveled hindfoot screw D7.0 L85
270 007	BEPOD 3A beveled hindfoot screw D7.0 L45	270 016	BEPOD 3A beveled hindfoot screw D7.0 L90
270 008	BEPOD 3A beveled hindfoot screw D7.0 L50	270 017	BEPOD 3A beveled hindfoot screw D7.0 L95
270 009	BEPOD 3A beveled hindfoot screw D7.0 L55	270 018	BEPOD 3A beveled hindfoot screw D7.0 L100
270 010	BEPOD 3A beveled hindfoot screw D7.0 L60	270 019	BEPOD 3A beveled hindfoot screw D7.0 L105
270 011	BEPOD 3A beveled hindfoot screw D7.0 L65	270 020	BEPOD 3A beveled hindfoot screw D7.0 L110
270 012	BEPOD 3A beveled hindfoot screw D7.0 L70	270 021	BEPOD 3A beveled hindfoot screw D7.0 L115
270 013	BEPOD 3A beveled hindfoot screw D7.0 L75	270 022	BEPOD 3A beveled hindfoot screw D7.0 L120

MIDFOOT SCREWS Ø4.5 MM



INDICATIONS

The Ø4.5 mm hindfoot screws standard or beveled, are designed to meet the following indications:

- Foot arthritis
- Fixation of bone fragments
- Foot fracture management

And more specifically:

- Total or partial midfoot arthrodesis
- Talonavicular or calcaneocuboid arthrodesis
- Arthrodesis of the Hallux Metatarsophalangeal Joint

IMPLANTS LIST

MIDFOOT SCREWS Ø4.5 MM



REF.	DESIGNATION	REF.	DESIGNATION
269 509	BEPOD 3A midfoot screw D4.5 L28	269 517	BEPOD 3A midfoot screw D4.5 L44
269 510	BEPOD 3A midfoot screw D4.5 L30	269 519	BEPOD 3A midfoot screw D4.5 L46
269 511	BEPOD 3A midfoot screw D4.5 L32	269 520	BEPOD 3A midfoot screw D4.5 L48
269 512	BEPOD 3A midfoot screw D4.5 L34	269 521	BEPOD 3A midfoot screw D4.5 L50
269 513	BEPOD 3A midfoot screw D4.5 L36	269 523	BEPOD 3A midfoot screw D4.5 L54
269 514	BEPOD 3A midfoot screw D4.5 L38	269 526	BEPOD 3A midfoot screw D4.5 L58
269 515	BEPOD 3A midfoot screw D4.5 L40	270 023	BEPOD 3A midfoot screw D4.5 L62
269 516	BEPOD 3A midfoot screw D4.5 L42		

BEVELED MIDFOOT SCREWS Ø4.5 MM

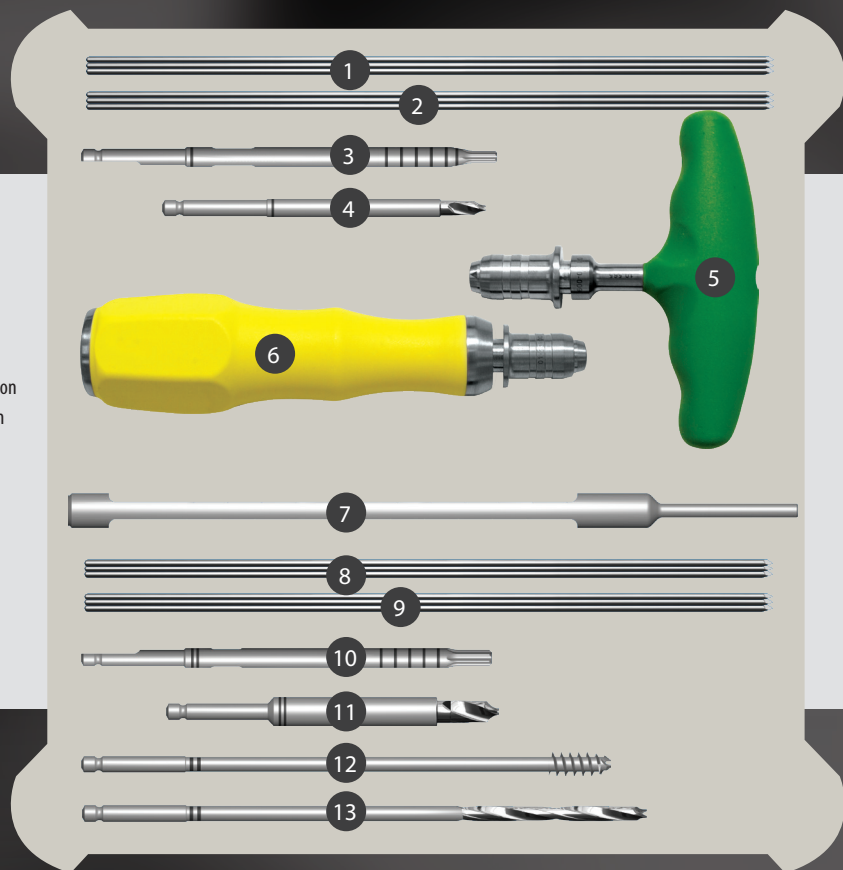


REF.	DESIGNATION	REF.	DESIGNATION
269 990	BEPOD 3A beveled midfoot screw D4.5 L28	269 998	BEPOD 3A beveled midfoot screw D4.5 L44
269 991	BEPOD 3A beveled midfoot screw D4.5 L30	269 999	BEPOD 3A beveled midfoot screw D4.5 L46
269 992	BEPOD 3A beveled midfoot screw D4.5 L32	270 000	BEPOD 3A beveled midfoot screw D4.5 L48
269 993	BEPOD 3A beveled midfoot screw D4.5 L34	270 001	BEPOD 3A beveled midfoot screw D4.5 L50
269 994	BEPOD 3A beveled midfoot screw D4.5 L36	270 002	BEPOD 3A beveled midfoot screw D4.5 L54
269 995	BEPOD 3A beveled midfoot screw D4.5 L38	270 003	BEPOD 3A beveled midfoot screw D4.5 L58
269 996	BEPOD 3A beveled midfoot screw D4.5 L40	270 004	BEPOD 3A beveled midfoot screw D4.5 L62
269 997	BEPOD 3A beveled midfoot screw D4.5 L42		

Material: Ti6Al4V titanium alloy according to ISO 5832-3

INSTRUMENTATION

- 1 ref. 269 550..... BE POD midfoot k-wire Ø1,6 L200 (x3)
- 2 ref. 271 115..... BE POD midfoot threaded k-wire Ø1,6 L200 (x3)
- 3 ref. 269 552..... BE POD midfoot screwdriver S15
- 4 ref. 269 554..... BE POD midfoot proxim cannulated drill bit Ø4,1
- 5 ref. 269 558..... BE POD mid/hindfoot screwdriver T-handle w/AO connection
- 6 ref. 269 559..... BE POD mid/hindfoot screwdriver handle w/AO connection
- 7 ref. 269 557..... BE POD mid/hindfoot depth device L200
- 8 ref. 269 551..... BE POD hindfoot k-wire Ø1,8 L200 (x3)
- 9 ref. 271 116..... BE POD hindfoot threaded k-wire Ø1,8 L200
- 10 ref. 269 553..... BE POD hindfoot screwdriver S25
- 11 ref. 269 555..... BE POD hindfoot proxim cannulated drill bit Ø6,1
- 12 ref. 269 556..... BE POD hindfoot cannulated distal tap Ø6,7
- 13 ref. 270 027..... BE POD hindfoot distal cannulated drill bit Ø4,1



GROUPE
FH ORTHO™



DISTRIBUTEURS
DISTRIBUTORS

FR, FH ORTHO SAS
3 rue de la Forêt - Zone Industrielle
BP 50009
68990 Heimsbrunn CEDEX - FRANCE
Tél. +33 (0)3 89 81 90 92
Fax : +33 (0)3 89 81 80 11
info@fhortho.com
www.fhortho.com

USA, FH ORTHOPEDICS INC.
OrthoEx
7327 E Tierra Buena Lane
Scottsdale, Arizona 85260 - USA
Phone: +1 (412) 965-0950
customerservice@fhortho-us.com
www.fhortho.com

PL, FH ORTHO POLSKA
Ul. Garbary 95/A6,
61-757 Poznan - POLSKA
Phone: +48 61 863 81 27
Fax: +48 61 863 81 28
biuro@implants24.pl
www.fhortho.com



FABRICANT
MANUFACTURER

FR, FH INDUSTRIE
6 rue Nobel, Z.I. de Kernevez
29000 QUIMPER - FRANCE
Tél. +33 (0)2 98 55 68 95
Fax : +33 (0)2 98 53 42 13
contact-fhi@fhortho.com
www.fhortho.com