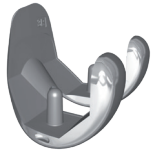


Femoral component

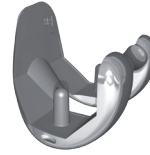


CEMENTED		
Size	Right	Left
1	257708	257714
2	257709	257715
3	257710	257716
4	257711	257717
5	257712	257718
6	257713	257719
7	266691	266692

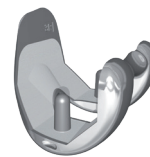


CEMENTLESS		
Size	Right	Left
1	257720	257726
2	257721	257727
3	257722	257728
4	257723	257729
5	257724	257730
6	257725	257731
7	266693	266694

Femoral component fixed bearing PS



CEMENTED		
Size	Right	Left
1	257684	257690
2	257685	257691
3	257686	257692
4	257687	257693
5	257688	257694
6	257689	257695
7	266695	266696



CEMENTLESS		
Size	Right	Left
1	257696	257702
2	257697	257703
3	257698	257704
4	257699	257705
5	257700	257706
6	257701	257707
7	266697	266698

Tibial insert



Size	FIXED CR			
	Th. 10	Th. 12	Th. 14	Th. 16
1	257740	257741	257742	257743
2	257746	257747	257748	257749
3	257752	257753	257754	257755
4	257758	257759	257760	257761
5	257764	257765	257766	257767
6	257770	257771	257772	257773
7	266708	266709	266710	266711

Tibial insert



Size	FIXED PS				
	Th. 10	Th. 12	Th. 14	Th. 16	Th. 18
1	257776	257777	257778	257779	257780
2	257782	257783	257784	257785	257786
3	257788	257789	257790	257791	257792
4	257794	257795	257796	257797	257798
5	257800	257801	257802	257803	257804
6	257806	257807	257808	257809	257810
7	266714	266715	266716	266717	266718

Tibial tray fixed bearing



CEMENTED		Size	CEMENTLESS	
	257659	1		257665
	257660	2		257666
	257661	3		257667
	257662	4		257668
	257663	5		257669
	257664	6		257670
	266703	7		266704



Patella

Inlay
Resurfacing

Size	Th. 7	Th. 8	Th. 10
22	265951		
25	257737		
30		257733	
34		257734	257735
38			257736

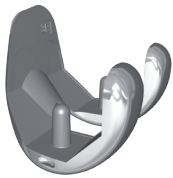
Tibial stem



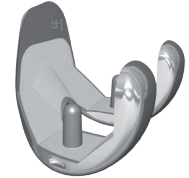
Length	Ø 10	Ø 14
70	263381	263382
110	263383	263384

OPTION

Femoral component



CEMENTED			CEMENTLESS	
Right	Left	Size	Right	Left
257708	257714	1	257720	257726
257709	257715	2	257721	257727
257710	257716	3	257722	257728
257711	257717	4	257723	257729
257712	257718	5	257724	257730
257713	257719	6	257725	257731
266691	266692	7	266693	266694



Tibial insert



MOBILE BEARING INSERT

Size	Th. 10	Th. 12	Th. 14	Th. 16	Th. 18
1	257812	257813	257814	257815	257816
2	257818	257819	257820	257821	257822
3	257824	257825	257826	257827	257828
4	257830	257831	257832	257833	257834
5	257836	257837	257838	257839	257840
6	257842	257843	257844	257845	257846
7	266720	266721	266722	266723	266724



ULTRA-CONGRUENT MOBILE BEARING INSERT

Size	Th. 10	Th. 12	Th. 14	Th. 16	Th. 18	Th. 20
1	265915	265916	265917	265918	265919	265920
2	265921	265922	265923	265924	265925	265926
3	265927	265928	265929	265930	265931	265932
4	265933	265934	265935	265936	265937	265938
5	265939	265940	265941	265942	265943	265944
6	265945	265946	265947	265948	265949	265950
7	266726	266727	266728	266729	266730	266731

Tibial tray mobile bearing



CEMENTED		Size	CEMENTLESS	
257671		1	257677	
257672		2	257679	
257673		3	257680	
257674		4	257681	
257675		5	257682	
257676		6	257683	
266705		7	266854	



Patella

Inlay
Resurfacing

Size	Th. 7	Th. 8	Th. 10
22	265951		
25	257737		
30		257733	
34		257734	257735
38			257736

Tibial stem



Length	Ø 10	Ø 14
70	263381	263382
110	263383	263384

OPTION

FABRICANT
MANUFACTURER



DISTRIBUTEURS
DISTRIBUTORS