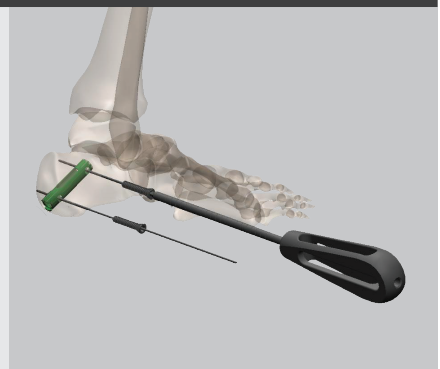


NAIL REMOVAL

STEP 1 • Removal of the locking screws

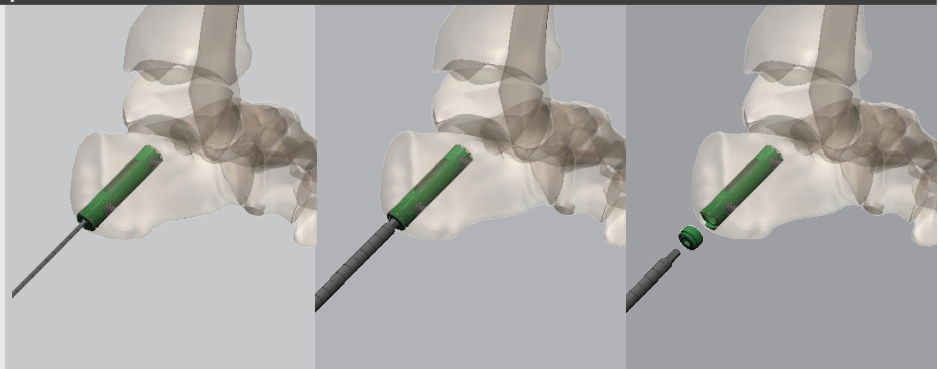
- Reopen the incisions.
- Locate the screw heads and introduce the guide K-wires (*ref. 256 158*) by hand.
- Introduce the screwdriver (*ref. 254 599*) over the K-wires and remove the screws.

Please note: If it is not easy to locate the screw heads (without the alignment frame) or if it is difficult to insert the K-wires by hand, go directly to step 2.



STEP 2 • Removal of the cap

- To remove the cap, use the screwdriver (*ref. 254 599*) and possibly use a pin to center it.

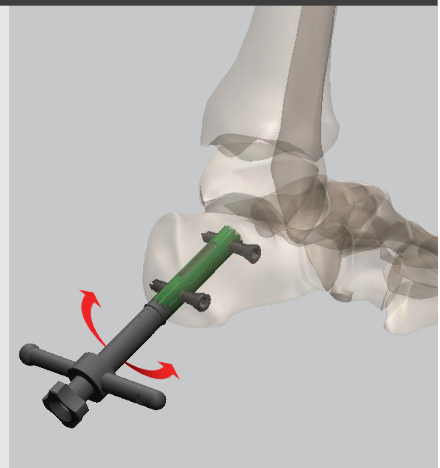


STEP 3 • Assembly of the nail holder and the connecting screw

- For the fracture nail, use the Ø10 mm nail holder (*ref. 265 579*) and handle-nail connector (*ref. 265 568*).
- For the arthrodesis nail, use the Ø12 mm nail holder (*ref. 265 580*) and handle-nail connector (*ref. 265 569*).

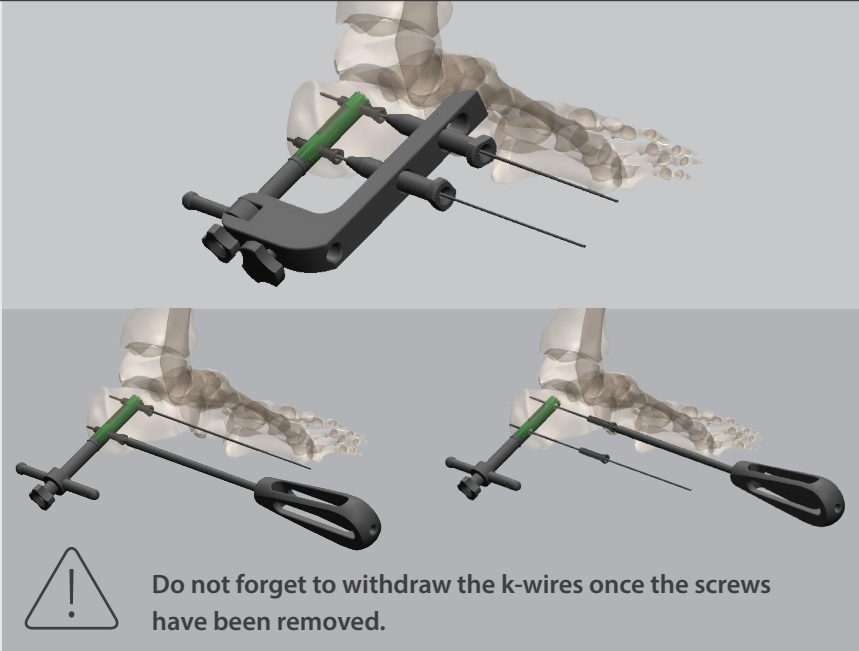


- Clear away the area around of distal end of the nail and the threading with a narrow curette.
- Position the opening of the nail holder on the medial side of the heel.
- If the locking screws have not been removed yet, go to step 4, otherwise go to step 5.



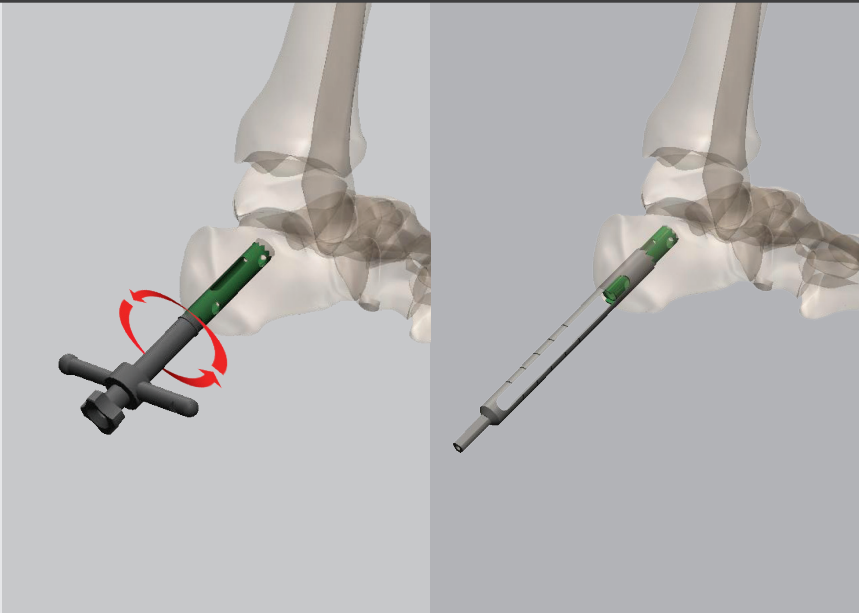
STEP 4 • Locate the screws, insert the K-wire, remove the screws

- Use the alignment frame (ref. 265 577) for the fracture nail or the alignment frame (ref. 265 578) for the arthrodesis nail, and the connecting screw (ref. 265 581).
- Use the drill guide for K-wires (ref. 266 148) and the Ø1.6 mm K-wires (ref. 266 158).
- Introduce the cannulated screwdriver (ref. 254 599) over the K-wires and remove the screws. If the screw heads are covered by bone, it is possible to work with the Ø10 mm hollow reamer (ref. 265 572) in order to free the drive of the screw.



STEP 5 • Drill around the implant

- If alternating rotating motions do not cause the nail to move, use the hollow reamer of the next largest diameter to extricate it:
- Remove the nail holder and place the K-wire with stopper (ref. 265 571), then put in the hollow reamer of correct size.
 - For the fracture nail, use the Ø12 mm hollow reamer (ref. 265 573).
 - For the arthrodesis nail, use Ø14 mm hollow reamer (ref. 265 578).



STEP 6 • Extraction of the nail

- Lift the nail holder and pull on the entire unit using alternating left/right movements to extract the nail.

