



HIP



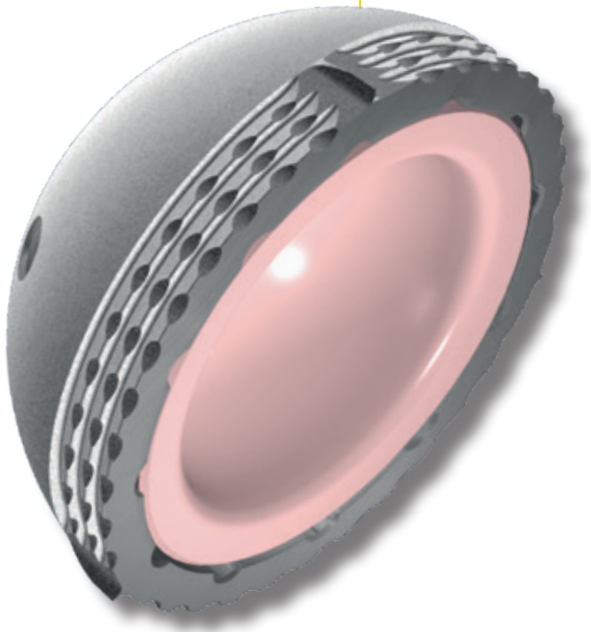
DOCUMENTATION

CEMENTLESS PRESS-FIT CUP

Hip & go

GROUP
FH ORTHO™

Hip & go



Press-fit acetabular cup

For more than 20 years, FH Orthopedics is specialized in manufacturing cementless total hip prostheses

The Hip'n go range of acetabular cups is the natural step forward, applying the latest technological advances in bearing couples, metallurgy and instrumentation.

Concept

The Hip'n Go concept of universality offers a preoperative and peroperative choice of:

- a rigid acetabular cup (ceramic insert or UHMWPE insert)
- a dual mobility acetabular cup (press-fit, tripod or cemented)

The rigid Hip'n go cup enables surgeons to make a choice between a classic polyethylene insert or a ceramic insert with a large diameter head, according to indications and the age of the patients.

The ceramic insert coupled with large diameter heads (32mm from size S46 up and 36mm from size S52) reduces risk of instability and wear.

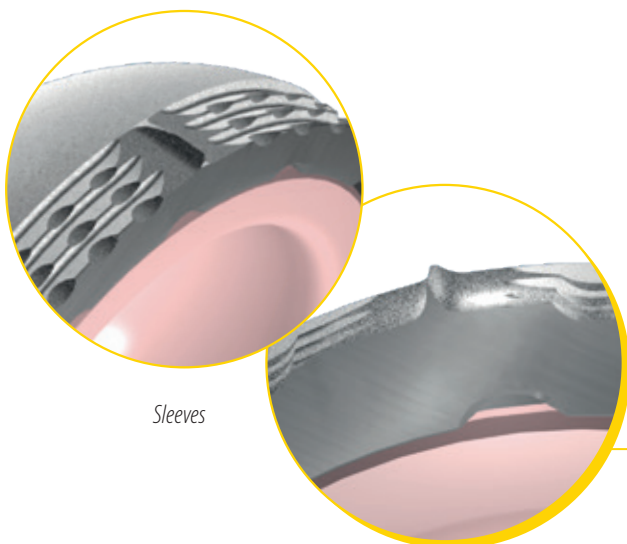
Range and materials

Cementless rigid Hip'n go cups are proposed in 10 sizes, ranging from a 46mm diameter to a 64 mm diameter, in 2 mm increments with an optional range up to size 74.

- Metal-backs are made from TA6 V4 titanium alloy. The outer-surface is sprayed with T40 titanium and coated with hydroxyapatite that facilitates secondary fixation of the implant in the long term.
- The inserts are made of:
 - UHMWPE polyethylene (Ultra High Molecular Weight Polyethylene) and available in diameter 28 mm.
 - Ceramic BioloX Delta for its tribological properties and increased resistance to fracture.

Press-fit of the Metal-back

The metal-back of the rigid acetabular cup is hemispherical with an equatorial flare due to a crenelated macrostructure giving it excellent press-fit qualities and perfect primary fixation. The macrostructure has also wings that increase the press-fit and avoid the cup from rotating in the receiving bone.



Sleeves

Metal-back

The inner face of the metal-back is designed to ensure fixation of the liners. A micro-threaded Morse taper of 18° entraps the Ceramic inserts and ensures fixation. Fixation of the PE inserts is acquired thanks to 12 notches, tooled into the mass, that receive the polyethylene fixation so as to orientate the liner by increments of 30°.

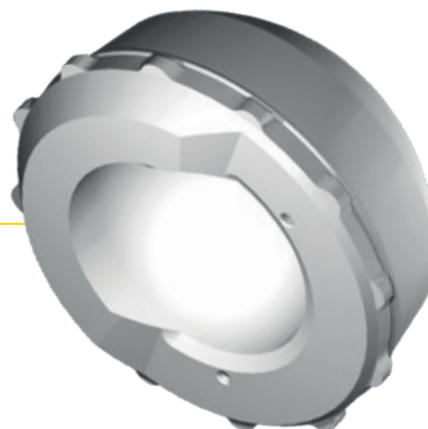
In addition to the notches, a lip is visible on the cup. It enables the PE inserts to be clipped in and ensure fixation.

The cup has 3 holes to enable flat-headed cancellous bone screws to be fitted if necessary. These are made of titanium alloy and are available in sizes 15 to 60 mm (a screw rack is supplied in the instrument set).



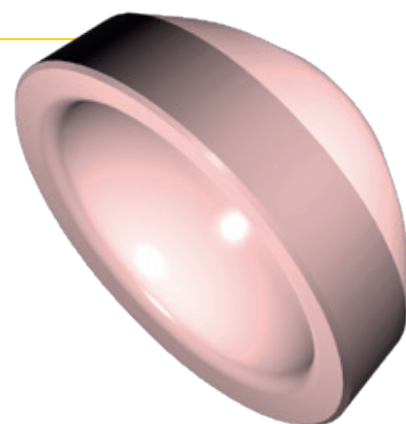
PE Inserts

Minimal thickness of polyethylene inserts is assured in order to prevent creep. Mobilization of the liner is suppressed thanks to 12 notches that also enable orientation of the posterior wall. There is a lip for clipping the inserts into the cup. These are available in diameter 28mm, either with a flat edge (Charnley type) or with a 4mm posterior wall (named STANDARD PE).



Ceramic Inserts

Ceramic inserts made of BioloX Delta alumina enable the use of heads of sizes Ø32mm (from size 46) and Ø36mm (from size 52). This type of ceramic is known for its resistance to fracture and hardness which reduces wear to the insert.



Correlation table for metal-backs and inserts

Inserts	Ø Heads	Ø Metal-Back									
		46	48	50	52	54	56	58	60	62	64
Flat-edge PE	28 mm	x	x	x	x						x
Posterior wall PE	28 mm	x	x	x	x						x
BioloX Delta	32 mm	x	x	x	x						x
	36 mm				x	x					x

REFERENCES

[Cementless Press-fit Acetabular cup]

CUPS

256 617	S46
256 618	S48
256 619	S50
256 620	S52
256 621	S54
256 622	S56
256 623	S58
256 624	S60
256 625	S62
256 626	S64

CERAMIC INSERTS*

256 670	Ø32mm S46-48
256 671	Ø32mm S50
256 672*	Ø32mm S52
256 673*	Ø32mm S54-56
256 674*	Ø32mm S58-74
256 675	Ø36mm S52
256 676	Ø36mm S54-56
256 677	Ø36mm S58-74

*Only on request

FIXATION SCREWS**

207 110	Ø6.5mm L.15 mm
207 111	Ø6.5mm L.20 mm
207 113	Ø6.5mm L.25 mm
207 115	Ø6.5mm L.30 mm
207 117	Ø6.5mm L.35 mm
207 120	Ø6.5mm L.40 mm
207 122	Ø6.5mm L.45 mm
207 123	Ø6.5mm L.50 mm
207 127	Ø6.5mm L.60 mm

** Delivered with the instrument set

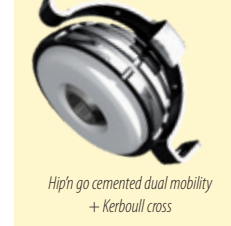
PE STANDARD INSERTS

256 755	Ø28mm S46-48
256 648	Ø28mm S50
256 649	Ø28mm S52
256 650	Ø28mm S54-56
256 651	Ø28mm S58-74

FLAT EDGED PE INSERTS

256 754	Ø28mm S46-48
256 637	Ø28mm S50
256 638	Ø28mm S52
256 639	Ø28mm S54-56
256 640	Ø28mm S58-74

OTHER IMPLANTS OF THE RANGE



DISTRIBUTEURS
DISTRIBUTORS



FABRICANT
MANUFACTURER

GRUPE
FH ORTHO™

FR, FH ORTHO SAS
3 rue de la Forêt - Zone Industrielle
BP 50009
68990 Heimsbrunn CEDEX - FRANCE
Tél. : +33 (0)3 89 81 90 92
Fax : +33 (0)3 89 81 80 11
info@fhortho.com
www.fhortho.com

USA, FH ORTHOPEDICS INC.
OrthoEx
7327 E Tierra Buena Lane
Scottsdale, Arizona 85260 - USA
Phone: +1 (412) 965-0950
customerservice@fhortho-us.com
www.fhortho.com

PL, FH ORTHO POLSKA
Ul. Garbary 95/A6,
61-757 Poznan - POLSKA
Phone: +48 61 863 81 27
Fax: +48 61 863 81 28
biuro@implants24.pl
www.fhortho.com

FR, FH INDUSTRIE
6 rue Nobel, Z.I. de Kernevez
29000 QUIMPER - FRANCE
Tél. : +33 (0)2 98 55 68 95
Fax : +33 (0)2 98 53 42 13
contact-fhi@fhortho.com
www.fhortho.com